

# Conference Program

## 18<sup>th</sup> IIAI International Congress on Advanced Applied Informatics



Venue: Kitakyushu International Conference Center, Kitakyushu, Japan

**July 13-19, 2025, Kitakyushu Japan**

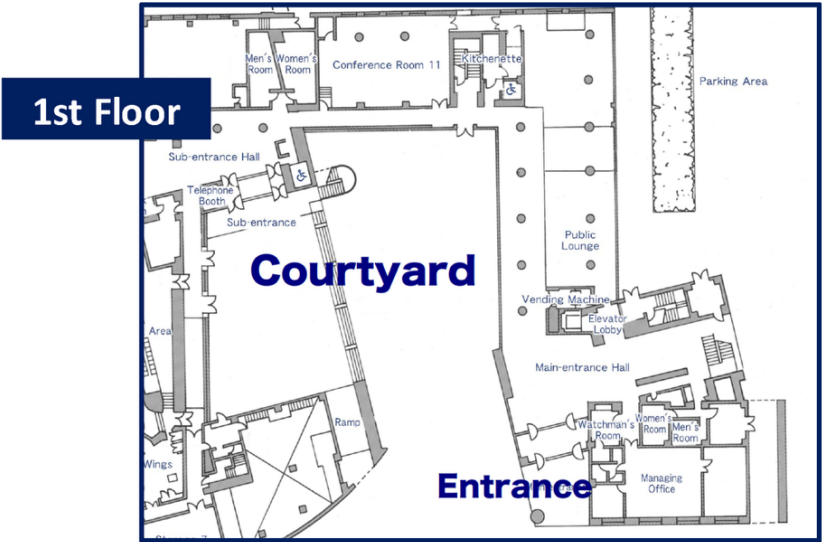
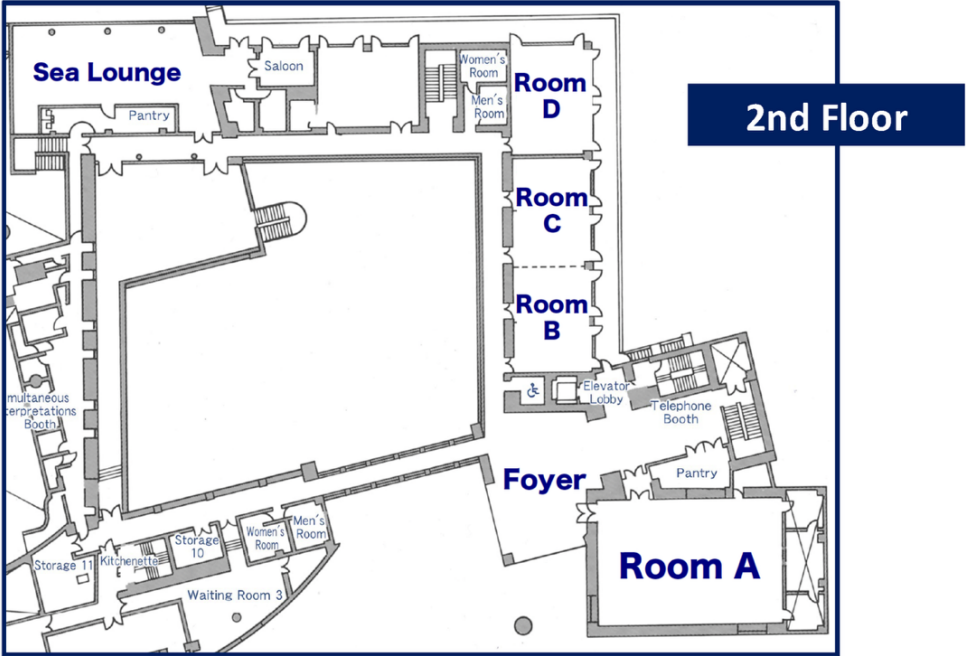
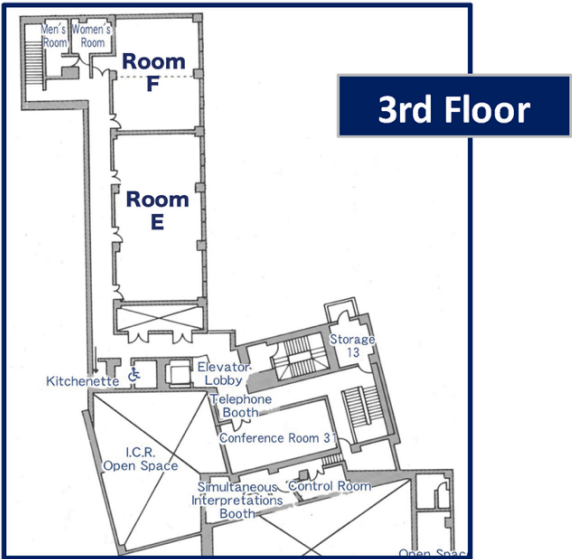
## Program at a Glance

### 18th IIAI International Conference on Advanced Applied Informatics (IIAI AAI 2025)

July 13-18, 2025, Kitakyushu International Conference Center, Kitakyushu, Japan

July 13 (Sun)							
	Foyer	Room A	Room B	Room C	Room D	Room E	Room F
12:00PM-5:30PM	Registration						
1:00PM-2:40PM		SCAI-SS3-1	DSTM-SS3 + SBIT 1	DSIR-SS2-1 + ESKM 1	CDEF-SS2-1	N/A	N/A
2:40PM-3:00PM	Coffee Break						
3:00PM-5:05PM		SCAI-SS3-2	SCAI-SS3-3	DSTM-SS2	BMOT-SS2-1	N/A	N/A
4:30PM-5:30PM	Welcome Cocktail @ Sea Lounge						
July 14 (Mon)							
	Foyer	Room A	Room B	Room C	Room D	Room E	Room F
9:15AM-5:00PM	Registration & Morning Coffee (9:15AM-10:00AM)						
9:30AM-11:35AM		SCAI 1	Business Center	BMOT-SS2-2 + BMOT 1	CDEF-SS2-2	N/A	N/A
11:35AM-1:00PM	Lunch on your own						
1:00PM-1:30PM	AAI 2025 Opening Ceremony at International Conference Center						
1:30PM-2:20PM	Keynote 1 at International Conference Room						
2:20PM-3:10PM	Keynote 2 at International Conference Room						
3:10PM-3:25PM	Coffee break						
3:25PM-5:30PM		N/A	Business Center	DSIR-SS2-2	CDEF-SS2-3	N/A	N/A
4:45PM-5:15PM		Poster setting	Business Center				
6:00PM-8:00PM	Welcome Reception + Poster Session						
July 15 (Tue)							
	Foyer	Room A	Room B	Room C	Room D	Room E	Room F
9:15AM-5:00PM	Registration & Morning Coffee (9:00AM-10:00AM)						
9:30AM-11:35AM		SCAI 2	Business Center	SBIT 2	CDEF-SS1	ESKM-SS2-1	LTLE-SS2 + LTLE 1
11:35AM-1:00PM	Lunch on your own						
1:00PM-2:40PM		LTLE 2	Business Center	DSIR-SS1&SS4	BMOT-SS1 + BMOT 2	ESKM-SS2-2	ITCS
2:40PM-3:00PM	Coffee Break						
3:00PM-4:15PM		SCAI 3	Business Center	IDDC 1	ESKM-SS3 + ESKM 2	ESKM-SS2-3 + ESKM 3	ITCS
4:30PM-5:00PM	Bus departure from the courtyard for the banquet venue						
6:00PM-8:00PM	Conference Banquet						
July 16 (Wed)							
	Foyer	Room A	Room B	Room C	Room D	Room E	Room F
9:15AM-5:00PM	Registration & Morning Coffee (9:00AM-10:00AM)						
9:30AM-11:35AM		SCAI-SS2&SS3	Business Center	LTLE 3	BMOT 3	DSTM 1	ITCS
11:35AM-1:00PM	Lunch on your own						
1:00PM-2:40PM		SCAI 4	Business Center	SBIT-SS1	BMOT 4	DSTM SS1-1	ESKM SS1 + ESKM 4
2:40PM-3:00PM	Coffee Break						
3:00PM-4:40PM		SCAI 5	Business Center	IDDC 2	CDEF-SS2-4 + CDEF 1	DSTM SS1-2	N/A
5:00PM-6:30PM	Ice cold beer and Wine Festival @ Courtyard						
July 17 (Thu)							
	Foyer	Room A	Room B	Room C	Room D	Room E	Room F
9:15AM-5:00PM	Registration & Morning Coffee (9:00AM-10:00AM)						
9:30AM-11:35AM		SCAI 6	ESKM 5	LTLE 4	CDEF 2	N/A	N/A
11:35AM-1:00PM	Lunch on your own						
1:00PM-2:40PM		SCAI 7	LTLE 5	DSIR-SS3&SS5 + DSIR 1	CEDF 3	N/A	N/A
2:40PM-3:00PM	Coffee Break						
3:00PM-4:40PM		ESKM 6	SBIT 3	DSIR 2	LTLE 6	N/A	N/A
5:00PM-6:00PM	Farewel Reception @ Sea Lounge						
July 18 (Fri)							
	Foyer	Room A	Room B + C	Room B + C	Room D	Room E	Room F
9:30AM-1:00PM		N/A	Online (Physically broadcasted)		N/A	N/A	N/A
July 19 (Sat)							
TBA	Board meeting						

Floor plan





# Important Events and Social Events Summary

All registered participants are eligible to join in these events for free

## SNS Competition

Participants who actively share their experiences will have the chance to win **special prizes** from IIAI at the Farewell Reception. Also, **outstanding influencers award** will be sent after the conference.



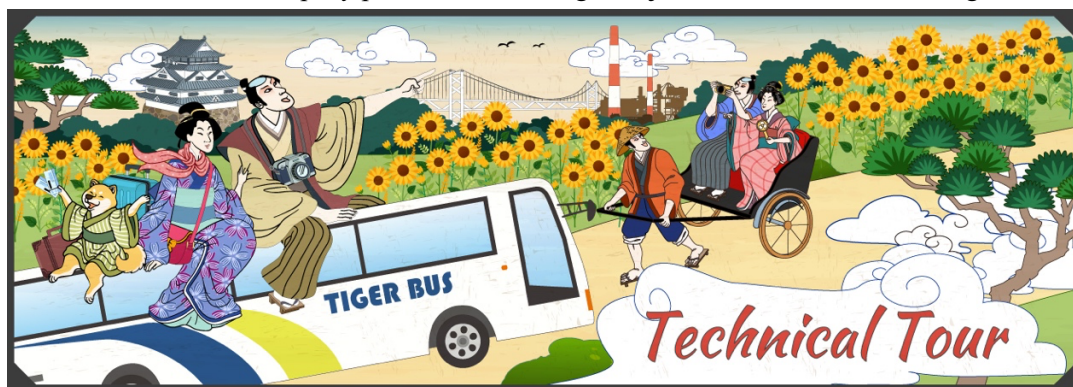
Welcome Cocktail at Sea Lounge, July 13 (Sun), 2025

Conference Opening Ceremony and Keynotes, July 14 (Mon), 2025

Welcome Reception and Poster Session, July 14 (Mon), 2025

Daily Technical Tour and Excursion (July 14-17, 2025)

- The person who would like to join in the daily technical tour (free for charge) can apply at the registration desk when the ticket is still available. Accompany person will be charged to join in. Please contact the registration desk officer.



Conference Banquet at Takami Shrine, July 15 (Tue), 2025

- Bus departure point: Courtyard at International Conference Center



Ice cold beer and Wine Festival at Courtyard, July 16 (Wed), 2025

Farewell Reception at Sea Lounge, July 17 (Thu), 2025



## July 13 (Sun) 1:00PM-2:40PM

### Room A SCAI-SS3-1

**Session Co-Chairs: Jaouhar Fattahi (Laval University), Mohamed Mejri (Laval University) and Mariam Wajdi Ibrahim (German Jordanian University)**

Incident Report Generation System for Elderly Care Facility Staffs

*Rie Sato, Kenta Ide, Tomoyuki Okamura, Ken-Ichi Tabei, Hisashi Hayashi and Hideki Murakoshi*

Nighttime Weather Estimation Using U-Net Architecture with Mobile Ground-Based Devices

*Shota Kusabiraki, Yuta Shimmura, Shin Suzuki, Nobuhiro Inuzuka, Atsuko Mutoh, Koichi Moriyama, Kosuke Shima and Kazunori Iwata*

Genetic Optimization of Item Multiplicity and Location Assignments in Automated Warehouses

*Kosei Uemura, Kazuya Okamoto, Hiroki Sakaji and Itsuki Noda*

Analyzing Relationship Between Head-on Collision and Road Curvature

*Keisuke Ando, Takeshi Uchitane, Naoto Mukai, Kazunori Iwata and Nobuhiro Ito*

### Room B DSTM-SS-3 and SBIT 1

**Session Chair: Morihiko Ikemizu (Advanced Institute of Industrial Technology)**

Toward a Quantitative Validation of Entrepreneurial Characteristics and Ecosystem in Japan: An Exploratory Factor Analysis

*Katsuki Yasuoka, Takaaki Hosoda, Kiyomi Miyoshi, Tokuro Matsuo and Qiang Ma*

Interorganizational Relationships and Structural Changes in Traditional Craft Production Areas: A Case Study of Oshima-Tsumugi in Kagoshima, Japan

*Takeshi Baba*

Correlation between learning motivation and realization among working students, and the factors - Examination using a hypothesis verification approach -

*Morihiko Ikemizu, Takaaki Hosoda, Yuya Yokoyama and Tokuro Matsuo*

Comparative Benchmarking of CPU-Only x86 64 and ARM64 Architectures for High-Performance Computing

*Wei-Yu Chen, Chau-Yi Chou, Yu-Bin Fang, Yi-Lun Pan and Vincent Shin-Mu Tseng*

### Room C DSIR-SS2-1 + ESKM 1

**Session Chair: Tetsuya Oishi (Kyushu Institute of Technology)**

Exploring Differences in Time Spent Tracking: IntelliBoard vs Edwiser Reports in Moodle

*Yuji Kobayashi*

Research on First year students' global competence development and its impact on study abroad: An Analysis Through the intercultural collaborative learning course "MCW"

*Noboru Miyoshi and Miki Cutting*

An Analysis of Learning Behaviors Using a System for Visualizing and Sharing Learning Assessments

*Nobuhiko Kondo, Toshiharu Hatanaka and Takeshi Matsuda*

Temporal Graph Convolutional Networks for Environmental Anomaly Detection

*Wei-Yu Chen, Ta-Wei Wang, Peggy Joy Lu, Hao-Tsung Yang and Vincent Shin-Mu Tseng*

## **Room D CDEF-SS2-1**

### **Session Chair: Hiroki Sakaji (Hokkaido University)**

Estimation of surprising businesses in companies using LLM

*Yoshimasa Kobayashi, Hiroyuki Sakai and Kaito Takano*

Improving Explainability in Stock Return Prediction Using Stock Forum Texts with Independent Component Analysis

*Shuta Nakajima, Toshiaki Watanabe, Mamoru Komachi and Atsushi Keyaki*

Forecasting Japanese Recessions Using Machine Learning and Text Data

*Mototsugu Shintani and Yusuke Oh*

Do Audit Firms Manage the Content of Key Audit Matters in Japan? Evidence from Lexical Diversity and Author Identification

*Nobushige Doi, Yusuke Nobuta and Takeshi Mizuno*

## **July 13 (Sun) 3:00PM-5:05PM**

## **Room A SCAI-SS3-2**

### **Session Co-Chairs: Jaouhar Fattahi (Laval University), Mohamed Mejri (Laval University) and Mariam Wajdi Ibrahim (German Jordanian University)**

Analysis of Agent Actions on a Rescue Simulation Task Assignment Optimization Problem

*Koki Yamada, Takeshi Uchitane, Kazunori Iwata and Nobuhiro Ito*

Improving Evacuation Efficiency through Dynamic Matching of Evacuees and Rescuers

*Kosuke Hayashi, Fumio Tanabe, Satoshi Yamazaki, Rie Sato, Hideki Murakoshi and Hisashi Hayashi*

Design and Analysis of Experiments for the Relationship between Components of Rescue Strategies and Map Characteristics

*Shuntaro Fujii, Kouta Katou, Itsuki Matsunaga, Keisuke Ando, Takeshi Uchitane, Naoto Mukai, Kazunori Iwata and Nobuhiro Ito*

Proposal of a Latent Information Visualization System Based on Agent Improvement Flow Analysis

*Ryuki Yamamoto, Mihono Maruoka, Keisuke Ando, Takeshi Uchitane, Naoto Mukai, Kazunori Iwata and Nobuhiro Ito*

## **Room B SCAI-SS3-3**

### **Session Co-Chairs: Jaouhar Fattahi (Laval University), Mohamed Mejri (Laval University) and Mariam Wajdi Ibrahim (German Jordanian University)**

Modeling evacuation decision-making and discussion using generative AI

*Fumio Tanabe, Kosuke Hayashi, Satoshi Yamazaki, Rie Sato, Hideki Murakoshi and Hisashi Hayashi*

Three-Stage Relation Identification in Argument Trees with BERT and GNNs

*Tomokazu Hasegawa and Kazutaka Shimada*

Macroscopic Observations on the COVID-19 Propagation in Europe During the First Year of the Pandemic

*Goizalde Badiola and Manuel Graña*

## **Room C     DSTM-SS2**

### **Session Chair: Takaaki Hosoda (Advanced Institute of Industrial Technology)**

A Study on a New Framework for the Influence of Time Constraints on Decision Making

*Hiroyuki Furuya, Takaaki Hosoda and Tokuro Matsuo*

Exploring Pre-Senior Decision-Making Styles Using the Qualitative Synthesis Method

*Eriko Musashi, Takaaki Hosoda and Daisuke Ikeda*

A study on organizational decision-making from the perspective of uncertainty and ambiguity – A Multi-Agent Simulation model

*Ryosuke Ando*

Validating the Factor Structure of Acceptance in Practical Decision-Making: A Confirmatory Factor Analysis Approach

*Takaaki Hosoda and Tokuro Matsuo*

## **Room D     BMOT-SS2-1**

### **Session Chair: Shimpei Matsumoto (Hiroshima Inst. of Tech.)**

Predicting success factors of regional revitalization crowdfunding projects using logistic regression analysis

*Kazuki Munehisa and Shimpei Matsumoto*

Experimental evaluation based on a technology acceptance model for the use of congestion mitigation applications

*Negai Nakamoto, Hiroyoshi Matsumoto and Shimpei Matsumoto*

The Influence of Visual Elements and Color Sensitivity on Product Image Selection

*Nozomi Fujiwara, Kouki Saeki and Shimpei Matsumoto*

Quantifying Momentum Effects via Risk-Adjusted Portfolio Optimization with the Hurst Exponent

*Tsubasa Ando and Takashi Hasuike*

A Regional Digital Transformation System for Enhancing Local Vegetable Supply in School Lunches

*Tomoko Kashima, Takashi Hasuike and Shimpei Matsumoto*

An Extension of the Levenshtein Distance for Learning Process Analysis in Constructive Learning and an Evaluation of Its Effectiveness

*Natsumi Tanabe, Karin Yagami and Shimpei Matsumoto*

## **July 13 (Sun) 4:30PM-5:30PM**

<b>Welcome Cocktail at Sea Lounge</b>
---------------------------------------

---



## July 14 (Mon) 9:30AM-11:35PM

### Room A SCAI 1

#### Session Chair: Takafumi Nakanishi (Tokyo University of Technology)

Extraction of Human Relationship Terms Associated with Characters and Speakers from Novel Lines

*Tomoaki Yasuda and Kazuaki Ando*

Research on a Rice Growth Stages Classification Method for an Automatic Weed Control Robot in Paddy Fields

*Shunya Abe, Tetsuya Nakamura, Taiichiro Ookawa and Hironori Nakajo*

Experiments on Speaker Independent Speech Emotion Recognition

*Francisco Portal, Javier De Lope and Manuel Graña*

Customer Analysis and Text Generation: LLM-Generated Marketing Presence for Small Retail Stores

*Shiori Nakamura, Masato Kikuchi and Tadachika Ozono*

Large Language Models as Genetic Algorithm Optimizers

*Masaki Koga, Jinglue Xu and Hitoshi Iba*

### Room C BMOT-SS2-2 and BMOT 1

#### Session Chair: Shimpei Matsumoto (Hiroshima Inst. of Tech.)

Examining the Connection Between the Color Scheme of Event Announcement Images and View Counts on Social Media Through Machine Learning Models

*Kayu Morishige, Daichi Inoue and Shimpei Matsumoto*

AI RBSOs' Selection of Innovation Modes under Institutional Logic Tendency

*Wei Liu, Yuntao Li and Shuxia Wang*

Proposal of an SEIR Model Considering Inter-population transfers and vaccine availability in large populations.

*Hiroyoshi Matsumoto, Yusuke Yamauchi and Shimpei Matsumoto*

Digital Transformation in Japan's Accommodation Sector -A Case Study of TAP Hospitality Lab Okinawa

*Masashi Ishitani*

Awareness Changes in Participants in Online Symposiums - Observations from Pre- and Post-Questionnaire Survey Results

*Yuya Yokoyama, Tokuro Matsuo and Hidekazu Iwamoto*

### Room D CDEF-SS2-2

#### Session Chair: Hiroki Sakaji (Hokkaido University)

Tweets on Childbirth in Japan: Sentiment and Influence

*Toshitaka Sekine and Tetsuro Wada*

How Much Do Qualitative Changes in R&D Activities Disclosure Text Explain Corporate R&D Investment? An Empirical Analysis of the Constituents of TOPIX 500

*Nobushige Doi*

Collecting Causal Relation Article Pairs on Stock Price Fluctuation by LLMs

*Yurina Kosai, Shunsuke Nishida, Rikuto Tsuchida, Man-Yun Liu and Takehito Utsuro*

Analysis of the Keiki Watchers Survey using Independent Component Analysis and Linear Discriminant Analysis

*Yuika Shiina, Masahiro Kato and Ryo Inokuchi*

Perspectives on Michelin Green Star Restaurants: Inspector and Customer Review Analysis

*Yu-Hsiang Hsiao, Mu-Chen Chen and Pei-Rou Yang*

## **July 14 (Mon) 11:35AM-1:00PM**

Lunch on your own (Beverage and snacks are available at Foyer)

## **July 14 (Mon) 1:00PM-1:30PM**

**Opening Ceremony at Room A**

## **July 14 (Mon) 1:30PM-2:20PM**

**Keynote Address 1 at Room A**

**Session Chair: Ford Lumban Gaol, Ph.D. (Bina Nusantara University / IEEE CS Chair Indonesia / IIAI ASEAN President)**

**Towards Building a Medical Foundation Model Using Self-Supervised Learning Techniques**

***Kwei-Jay Lin, Ph.D. (Chang-Gung University and University of California)***

### **Abstract**

AI has changed how we live and work in the past decades. AI is also coming to the medical field even with its extremely high standard of quality and accountability. Among factors that make AI so successful now, including big hardware, large model, and big data, AI research in medicine has the most challenge on finding a large volume of high-quality medical data. The problem is that human cost required to label or annotate high quality medical data from raw data is much more expensive due to the scarcity and time demand on domain experts in each medical field. In this talk, we share our approaches and experiences on using powerful AI technologies such as self-supervised learning, fine tuning, and multi-modality learning to meet the challenge.

### **Bio**

Kwei-Jay Lin is a Chair Professor in the Department of Artificial Intelligence and Director of the AI Research Center at the Chang Gung University (CGU), Taoyuan, Taiwan. He was the Founding Dean, CGU College of Intelligent Computing during 2022-2024. He is an IEEE Fellow and a Professor Emeritus in the EECS Department at the University of California, Irvine. He is a Visiting Professor at the National Taiwan University and National Tsing Hua University, Zhejiang University, and Nagoya Institute of Technology in Japan.

Prof. Lin received the MS and PhD degrees in Computer Science from the University of Maryland, College Park, USA. He is Editor-In-Chief of the Springer Journal on Service-Oriented Computing and Applications (SOCA). He was an Associate Editor of IEEE Transactions on Parallel and Distributed Systems, and an Associate Editor of IEEE Transactions on Computers. He has served on many international conferences as conference and program chairs. His

research interest includes machine learning theory, computer vision, medical AI, IoT middleware, service-oriented computing, real-time systems, and distributed computing.

**July 14 (Mon) 2:20PM-3:10PM**

**Keynote Address 2 at Room A**

**Session Chair: Fahim Khan (Toyo University)**

**Greenhouse Detection and Energy Demand Modeling Using Aerial Imagery and AI**

***Yung-Cheol Byun, Ph.D. (Jeju National University)***

**Abstract**

Achieving 100% renewable energy (RE100) critically depends on addressing the issue of electricity curtailment. Instead of halting renewable energy generation during periods of surplus electricity, the excess power should be utilized to produce green hydrogen, which can subsequently serve as an energy source for agricultural facilities, such as greenhouses, during electricity shortages.

This study proposes a method for accurately detecting greenhouses and modeling their energy demand using aerial imagery combined with Vision Transformers (ViT). While previous research primarily focused on general object detection and land classification, this study aims for precise detection of small-scale energy-consuming structures, like greenhouses, to enhance the accuracy of energy demand predictions. To achieve this, the study compares the performance of Open-World Localization Vision Transformer (OWL-ViT) and YOLO models, subsequently employing the Segment Anything Model (SAM) for detailed area segmentation. This segmentation accurately identifies the area of energy-consuming structures, and together with regional climate data, facilitates predictions of green hydrogen consumption.

Ultimately, this research implements a precise energy demand prediction model based on aerial and satellite imagery, enabling effective estimation of hydrogen energy demand specifically for greenhouse operations in agriculture. By significantly improving detection accuracy over existing methods, the proposed approach provides practical strategies for transitioning to renewable energy, allowing the produced green hydrogen to be effectively utilized across various sectors, including agriculture.

**Bio**

Professor Yung-Cheol Byun is a full professor in the Department of Computer Engineering at Jeju National University. His main research interests include Artificial Intelligence, Machine Learning, Pattern Recognition, Blockchain and Deep Learning-based Applications, Big Data and Knowledge Discovery, Time Series Data Analysis and Prediction, Intelligent Agents, Medical Applications, Recommendation Systems, AI-based Distributed Energy, Green Hydrogen, and AI. He currently leads the Machine Learning Laboratory within the department and has published over 200 SCIE-indexed journal papers.

From 2012 to 2014, he conducted research as a visiting professor at the University of Florida. He currently serves as the Director of the Information Science Technology Institute, the Head of the Jeju Industry-Academia Convergence District Project, the Director of the Venture Startup Academy Center, and the Head of the RIS Office for High-Intelligent



Service. He has also served as the Director of the Advanced Science and Technology Research Center and as an outside director of Jeju Bank. He is actively involved in various academic societies including the Korean Institute of Information Scientists and Engineers (KIISE) and the Korea Information Technology Society (KIT).

Beyond his research, Professor Byun has organized international conferences such as CNSI (Computer, Network, Systems, and Industrial Engineering) and ICESI (Electric Vehicle, Smart Grid, and Information Technology). Since 2017, he has successfully hosted a Machine Learning Camp in Jeju, selecting 20 researchers from around the world annually. He also leads global programs such as the AI Camp for Asian university students. In addition, he serves as a general chair, program chair, and session chair at various international conferences and workshops.

Professor Byun was born in Jeju, Korea. He received his MS (2001) and PhD (1995) from Yonsei University and his BS from Jeju National University in 1993. Prior to joining Jeju National University, he worked as a special lecturer at Samsung Electronics in 2000 and 2001, and as a senior researcher at the Electronics and Telecommunications Research Institute (ETRI) from 2001 to 2003. He joined Jeju National University as an assistant professor in 2003 and has been serving there since.

## **July 14 (Mon) 3:25PM-5:30PM**

### **Room C DSIR-SS2-2**

#### **Session Chair: Yuji Kobayashi (Kyushu Institute of Technology)**

Development and Operation of an All-in-One IR System

*Tetsuya Oishi*

Evaluation of an Asynchronous Lecture Model based on Motivation Scales

*Shin'Nosuke Yamaguchi, Yoshimasa Ohnishi and Kazunori Nishino*

Designing KAYOWAI Robots for Learning persistence Based on the ARCS Model

*Nana Kodama, Naka Gotoda and Takayoshi Kitamura*

Developing a Tutorial for SCOT Student Training with Automated Feedback Support

*Kenshin Murakami, Naka Gotoda and Yuji Kobayashi*

### **Room D CDEF-SS2-3**

#### **Session Chair: Masanori Hirano (Preferred Networks, Inc.)**

Evaluating Reranking of Accounting Knowledge Web Pages by LLMs towards RAG based QA

*Shohei Iida, Kuta Takahashi, Takashi Mitadera, Rikuto Tsuchida, Ryo Hasegawa, Takehito Utsuro, Youchao Lin and Rie Shishido*

The Construction of Instruction-tuned LLMs for Finance without Instruction Data Using Continual Pretraining and Model Merging

*Masanori Hirano and Kentaro Imajo*

Utilizing Text Fragments of Stock Price Fluctuation Factors in Charts for Financial News Article Generation by LLMs

*Yurina Kosai, Shunsuke Nishida and Takehito Utsuro*

pfmt-bench-fin-ja: Preferred Multi-turn Benchmark for Finance in Japanese

*Masanori Hirano and Kentaro Imajo*

## July 14 (Mon) 6:00PM-8:00PM

### Welcome Reception and Poster Session at Room A

Session Co-Chairs: Daisuke Ikeda (Kyushu U.), Yuichi Ono (U. of Tsukuba), Naruhiko Shiratori (Tokyo City U.), Takafumi Nakanishi (Tokyo U. of Technology), Shimpei Matsumoto (Hiroshima Inst. of Tech.), Hidekazu Iwamoto (Josai International U.), Yukihiro Shintani (Chiba Inst. of Tech.), Taishi Nemoto (U. of Kochi) and Takaaki Hosoda (Advanced Inst. of Industrial Tech.) and Masanori Hirano (Preferred Networks, Inc.)

#### ESKM Posters

Evaluating and Enhancing RAG Systems through Test and Source Analysis

*Kotsuwan Ornus, Zelan Shi and Kaunori Matsumoto*

Downscaling of Crime Counts from City Level into Neighborhood Level Based on Machine Learning

*Chen Zhang, Mamoru Amemiya, Daisuke Murakami and Tomoya Ohyama*

Multi-Label Classification for High School Mathematics Problems Using Retrieval-Augmented Generation

*Shun Tanaka and Keiichi Tamura*

Detection of Injury Patterns in Japanese Thoroughbred Racehorses

*Haruma Abe and Atsuko Yamaguchi*

Toward Extracting Generalized Cloud Resource Control Vocabulary from Existing Cloud Control Codes

*Haruhiro Takahashi, Takaaki Kawai and Naoki Fukuta*

Predicting Phagocytotic Activity of Leukocytes in Gram Stained Smears Images

*Kouya Kagemoto, Ryunosuke Nakajo and Kouichi Hirata*

Support for Recalling Past Events Using X Posts

*Yuta Tsutsumi and Harumi Murakami*

Toward a Better Wording Recommendation System for Social Media Posts based on the Ethical Ontology

*Hiroki Kawabata and Naoki Fukuta*

A Study on the Key Factors Influencing Consumers' Adoption of NFT Application Services from the Perspective of PPM Framework

*Chih-Jou Chen, Ju-Chuan Wu and Cheng-You Tsai*

A Feasibility Study on the Automatic Classification of Case Reports Using Large Language Models and Phenotyping Flowcharts

*Atsuko Yamaguchi, Yuka Tateisi and Toyofumi Fujiwara*

A Knowledge Graph Approach for Analyzing Player Social Media Reviews

*Ziyu Zhao and Junichi Fukumoto*

#### LTLE Posters

Designing an augmented reality educational board game integrated with multi-dimensional scaffolding and instant diagnose mechanism in culinary training

*Cheng-Tai Li, Yu-Ju Huang, Pei-Cen Wang, Fan-Yun Xiao and Huei-Tse Hou*

Experimental Development of Learning Support System for Toyosaka-mai Using Consumer-Grade Motion Capture

*Hiroto Yamakawa*

Design of Instructional Activities Integrating Educational Board Game Learning and Formative Evaluation of Multiplayer Online Card Games

*Yu-Yun Su, Yu-Chi Chen and Huei-Tse Hou*

Dialogue System for Language Learning using Gaze Tracking and Facial Expression Recognition

*Yosuke Seki*

Development and Evaluation of a Digital Concept Mapping System for Nursing Process Learning Support — An Assessment Based on Nursing Students' User Experience —

*Sakiko Sumai, Norio Ishii, Yuri Suzuki and Hiroaki Sawano*

Exploring the Effects of a Scaffolded Programming Learning Environment Integrated with ChatGPT on Students' Learning Performance and Self-Efficacy

*Li-Heng Hung and Chia-Jung Chang*

Investigating Critical Thinking Patterns in a VR Educational Game: A Behavioral Sequential Analysis

*Tsung-Yen Chuang, Yu-Hsuan Lu and Wei-Fan Chen*

Evaluating the Impact of Different Generative Artificial Intelligence Reflection Scaffolding Intervention Sequences on Digital Content Creation

*Yu-Chi Chen*

Design of a Collaborative Science Educational Game Using Shared Large Screen and Mobile Device Control Mechanisms

*Yu-Jen Lin, Huei-Tse Hou and Yu-Chi Chen*

Design of a Learning Support System for Understanding Conceptual Knowledge of Web Server Construction

*Yuto Ohira, Kenichi Fukamachi and Hiroshi Komatsugawa*

Considering realtime feedback for supporting teacher using eye gaze data in virtual reality

*Taichi Akana, Kousuke Mouri, Masaru Okamoto, Yukihiro Matsubara and Lin Shengkai*

Enhancing Educational Outcomes by Using Machine Learning to Classify and Organize Classrooms

*Phan Nhu Quynh*

A Preliminary Evaluation of Combining Game-Based Exploratory Picture Books with Generative AI-Led Learning Activities for Kebbi Robot

*Han-Shu Hsieh and Huei-Tse Hou*

The Prediction Modeling System for Monitoring Elementary Students' Mathematics Progress in Online Curriculum-Based Measurement

*Mengping Tsuei*

Exploring Collaborative Argumentation Through a Local-Issue-Based Board Game: A Case Study with High School Student Groups

*Kuo-Yang Chiu, Mingfong Jan and Tieh-Huai Chang*

A Game Design for Market Research and Planning Skills Development in Catering Industry Integrating Multi-dimensional Generative AI Characters Interaction Mechanisms

*Yu-Cheng Lin and Huei-Tse Hou*

Fostering AI Understanding and Perception through SDG-Oriented Hands-On Learning for Non-CS Students

*Hercy N. H. Cheng and Charles C. Y. Yeh*



Design of a nursing staff handover training game integrating generative AI consultation mechanism and SVVR simulation scene

*Wen-Lin Chen, Chih-Chung Chien, Pei-Cing Ngu and Huei-Tse Hou*

Designing and Evaluating Online Game-based Learning with Growth Mindset Guidance Mechanism to Develop Creativity in the Workplace

*Bi-Huei Jian and Huei-Tse Hou*

Design and fidelity evaluation of a generative AI-based standardized patient consultation simulation game with character fidelity optimization techniques

*Pei-Ching Ngu, Chih-Chung Chien, I-Chieh Mao, Yen-Ting Ho and Huei-Tse Hou*

Leveraging AI-generated storytelling for immersive narrative scaffolding in mobile-based board game learning on sustainable development goals

*Cheng-Tai Li, Chih-Yung Chien, Hong-Zhi Huang, Can-Yu Li, Yu-Sheng Lin, Kuan-Yu Yen, Lu-An Chen, Yu-Ping Chien and Huei-Tse Hou*

Interactive Computer Simulation and Animation (CSA) to Improve Student Learning of Impulse and Momentum in Rigid-Body Engineering Dynamics

*Ning Fang*

An Educational Game with Generative AI-based Standardized Patients for Respiratory Therapy Healthcare Decision Making training

*Tzu-Pei Wang and Huei-Tse Hou*

Personalizing Learning through AI: Student-Designed Companions Using Retrieval-Augmented Generation

*Chang-Yen Liao*

Case Study of UEC's Novel Learning Environment for Cultivating Engineering Talents

*Kahori Ogashiwa, Tsuyoshi Okuno, Masanori Takagi, Akihiro Kashiara, Maomi Ueno, Masakazu Muramatsu and Shunichi Tano*

An AI-Powered Interactive Cognitive Training System Scheme for Older Adults

*Jun-Ming Su and Cheng-Yu Hsieh*

Promoting Emotional Learning in Adolescents: A Digital Game-Based Learning Approach

*Hsiu-Ling Chen and Kai-Lin Wang*

From Catching Pok  $\pm$  on to Catching Truths: Scientific Inquiry Among Pok  $\pm$  onGo Gamers

*Tieh-Huai Chang and Mingfong Jan*

Designing Reality Game for Cultivating Expert Thinking and Art and Natural Science Literacy

*Wan-Lin Yang*

A Human-Centered AIoT Learning Model: Integrating Design Thinking into STEAM PBL to Improve Creative Product Development

*Ya-Ting Carolyn Yang, Hsiao-Hsuan Chang and Jeen-Shing Wang*

A Study on 3D Printer in Japanese Schools: Focus on Courses of Study and Number of Articles

*Shoko Usui, Michiyo Oda, Yoko Noborimoto and Hidemitsu Furukawa*

Design of a Monument History Educational Game Using SVVR-Based Spatial Exploration and Clue-Combining Puzzle Mechanisms

*Yen-Ting Ho, Chai-Ying Lee, Yi-Ning Tsao, My-Dinh Xu, Juliana Juliana and Huei-Tse Hou*

## **DSIR Posters**

Assessing Social Applicability of Student Learning Out-comes Considering Faculty and Career Path Differences

*Shinji Hosokawa and Akihiro Naganawa*

A Study of the Relationship between Learning in a Professional Seminar and its Workplace Application for Graduates of a Social Sciences Laboratory

*Tatsuya Tsumagari and Yoko Nakazato*

Research on Automatic Generation of Data Access and Visualizations Using LLM Agents

*Sora Watanabe, Haruki Ueno and Hiroshi Komatsugawa*

Designing Behavioral Indicators for Assessing Learning Outcomes Based on Diploma Policy

*Sayaka Matsumoto, Kunihiro Takamatsu, Shotaro Imai, Tsunenori Inakura and Masao Mori*

Development of AI teaching materials for elementary school students using STEAM education

*Kaito Moriyama and Takaaki Arahira*

Mapping the Landscape of CSR Research through Citation Network Analysis

*Kumi Ushio*

Obtaining Factors of What Was Acquired through Questionnaire Aimed at Graduates of an Educational Institute

*Yuya Yokoyama, Takaaki Hosoda, Morihiko Ikemizu and Tokuro Matsuo*

## **SCAI Posters**

Acute Myocardial Infarction Detection Based on Single-Lead Electrocardiogram Using Temporal Image Transformation and Deep Learning

*Bo-Yi Wu, Jui-Chih Chang, Ya-Ting C. Yang and Jeen-Shing Wang*

Investigation of Brightness and Traffic Volume as Factors Affecting Traffic Accidents Using Traffic Accident Risk Analysis

*Ryo Hatano, Yu Sasaki, Erina Shirai, Miwa Hoshino, Keisuke Ando, Takeshi Uchitane, Naoto Mukai, Kazunori Iwata and Nobuhiro Ito*

Personalized Music Impression Estimation Based on Dynamic User Model

*Hui Zhou and Takahiro Hayashi*

Deep Learning-Based Parameter Identification for Lithium-Ion Battery Equivalent Circuit Models

*Chun-Cheng Huang, Chun-Hsien Yu, Yi-Hua Liu, Zong-Zhen Yang, Yu-Fang Hsueh and Shi-Quan Huang*

Component Configuration Optimization for System Reliability via GWO and Monte Carlo Simulation

*Cheng-Ta Yeh and Po-Wei Wu*

Speaker Recognition Using VGG and MobileNet for Forensic Applications

*Jaouhar Fattahi, Bessel Belhassan Rahali, Mohamed Mejri, Ridha Ghayoula and Mohamed Glaoui*

A Tabular Data Approach to Skeleton-Based Human Action Recognition

*Shogo Oyabu and Keiichi Yamada*

Mining Online Reviews with Fake Review Detection to Improve Logistics Service Quality

*Mu-Chen Chen, Hsien-Hua Wu and Yu-Hsiang Hsiao*

Methods of measuring audience response applicable to traditional performing arts

*Masahiko Narita*

### **BMOT Posters**

A Study on the Key Factors for the Success in Evaluating Fast Fashion Enterprises' Brand Value Based on ESG

*Chia-Chi Hsu and Teng-Sheng Su*

Integrating Hybrid m-DANP and Service System Simulation for Short-Chain Logistics: A Case Study on Drone Delivery Selection

*Teng-Sheng Su, Ting-Yin Chen, Chen-Hsiang Ko, Yi-Xuan Zhao and Kuan-Chang Huang*

The Influence of Self-Focused Language on Crowdfunding Success Through the Lens of Strategic Self-Presentation

*Shu-Lu Hsu, Lei Zhou and Hersen Doong*

A Case Study on Strategic Digital Transformation in Traditional Manufacturing

*Tai-Yu Lin, Sheng-Pin Wu, Chien-Chih Wang, Kun-Zhong Lin, Yu-Hsuan Cheng, Wei-Yu Shen, Chiu-Han Chuang and Meng-Hsien Chen*

### **SBIT Posters**

Multi-Region Cloud Architecture for Hybrid Computing

*Hui-Shan Chen and Yi-Lun Pan*

Fault Diagnosis for Three-Phase Voltage Source Inverters Using Current Waveform Analysis and Machine Learning

*Chun-Hsien Yu, Chun-Cheng Huang, Zong-Zhen Yang, Shi-Xin Xu and Yi-Hua Liu*

Development of a Framework for Promoting the Use of Multiple Assignment Exercises in Basic Nursing Education

*Hanae Okamoto, Kiyoko Tokunaga, Katsuaki Suzuki and Hideto Ogasawara*

Aesthetic Quality Assessment of Images Using Text Tags with CLIP

*Atsushi Sugiura and Yuji Yamauchi*

Enhancing Anomaly Detection Accuracy with Conditional CutPaste

*Haruki Honda and Yuji Yamauchi*

Methodology of DAO-ization by Media Platforms Tailored to Organizational Structures

*Toru Takagi and Yukihiro Shintani*

### **IDDC Poster**

Research on Generative AI Dialogue Systems in Mixed Reality

*Hina Yoshida, Osamu Hsegawa, Mio Kikuhara, Haruki Ueno and Hiroshi Komatsugawa*

### **DSTM Poster**

Predicting Goodreads Choice Awards Winner based on Social Proof Theory

*Chiau Shu Pan and Yung Ming Li*

### **CDEF Posters**

A Socio-Economic Analysis of Car Retirement Program: Machine Learning-Based Approach for Equitable Policy

*Annie Wu*

Applying LLMs to Japanese Table Question Answering of Securities Reports

*Long Si, Yin Zhang, Xiaotian Wang and Takehito Utsuro*



Prediction of REITs performance using machine learning methods with alternative data

*Makoto Nakakita, Taiga Nishimura and Takahiro Hoshino*

---

## **July 15 (Tue) 9:30AM-11:35AM**

### **Room A    SCAI 2**

**Session Chair: Takafumi Nakanishi (Tokyo University of Technology)**

WELPSO: An Ensemble Learning Model for Multi-Party Conversation Disentanglement using Particle Swarm Optimization

*Cheng-Zen Yang, Syue-Rong Lin, Chi-Lun Chiang and Liang-Chen Lu*

Multiobjective Optimization for Feedback-based, Multi-hop Molecular Communication

*Junichi Suzuki, Yi Cheng Ren and Tadashi Nakano*

Multi-Object Tracking System with Dual Transformer and OC-SORT Model

*Hao-Chun Pai and Yi-Leh Wu*

Automating Query Generation for Support Inquiries via LLM-Based Main Topic Sentence Extraction

*Kaito Hoshi, Tomoya Tsukahara, Hironori Utsumi and Mizuho Sawada*

### **Room C    SBIT 2**

**Session Chair: Yukihiro Shintani (Chiba Institute of Technology)**

Improving Spectrum-Based Fault Localization through Targeted Augmentation of Failing Test Cases

*Chu-Ti Lin, Hau-Xuan Luo, Yi-Te Lu, Ting-Wei Tsai and Shao-Kuei Tang*

Evacuation Guidance System Using SSID-Based Communication with UAVs

*Shohei Taga, Munehiro Takimoto, Tomofumi Matsuzawa and Yasushi Kambayashi*

Implementation of AI-Based and Day-Based Access Control Function in DACS-Based PBNM Scheme

*Kazuya Odagiri, Shogo Shimizu and Naohiro Ishii*

The Impact of Surgery Duration Estimation on Room Openings: A Mixed-Integer Programming Model for Operating Room Scheduling

*Xinyun Bai, Mari Ito, Sinan Chen, Yusuke Nakata, Masaaki Suzuki, Tokito Koga and Aurelius Aaron*

Estimating Consumption Characteristics of Tourist Areas through Credit Card Data

*Hiroshi Tsuda*

### **Room D    CDEF-SS1**

**Session Co-Chairs: Yasutomo Kimura (Otaru University of Commerce), Kazuma Kadowaki (The Japan Research Institute, Limited) and Hokuto Ototake (Fukuoka University)**

Empirical Findings from Table-related Shared Tasks in Japanese Annual Securities Reports

*Yasutomo Kimura, Eisaku Sato, Kazuma Kadowaki and Hokuto Ototake*

A Hybrid Search for Complex Table Question Answering in Securities Report

*Daiki Shirafuji, Koji Tanaka and Tatsuhiko Saito*

Enhancing Large Vision-Language Models with Layout Modality for Table Question Answering on Japanese Annual Securities Reports

*Hayato Aida, Kosuke Takahashi and Takahiro Omi*

A Table Search Method for Securities Reports Based on Binary Classification Using Re-rank Filters

*Yuki Fujita, Ryota Mizushima and Hokuto Ototake*

Extracting and Structuring J-REIT Property Information from Tabular and Textual Sources via Few-Shot Prompting in Large Language Models

*Nobushige Doi and Mayuri Tanaka*

## **Room E    ESKM-SS2-1**

**Session Co-Chairs: Kouichi Hirata (Kyushu Institute of Technology) and Atsuko Yamaguchi (Tokyo City University)**

Enhancing Generative AI Output on Rare Diseases: Development of a Database for Retrieval-Augmented Generation System

*Teppei Okazaki, Toyofumi Fujiwara and Atsuko Yamaguchi*

A GNN model for Fraud Detection Focusing on the Distribution of Neighboring Nodes

*Minghao Wu and Daisuke Ikeda*

Detecting Bacteria in Gram Stained Smears Images by HIC-YOLO and Its Variants

*Hiroto Tabakotani, Ukyo Kashino and Kouichi Hirata*

Classifying Rectangle Regions of Bacteria in Gram Stained Smears Images

*Hiromu Kuroishi and Kouichi Hirata*

Mutual Learning Meets Double Descent: A Study of the Generalization Process

*Fumika Komori, Keiichi Nakanishi and Terumasa Tokunaga*

## **Room F    LTLE-SS2 and LTLE 1**

**Session Co-Chairs: Michiyo Oda (Reitaku University) and Yuichi Ono (University of Tsukuba)**

Perceptions and Strategies in Using Machine Translation for Japanese Learners of English

*Haruno Koshida and Yuichi Ono*

Enhancing Mandarin Listening through Game-Based Learning and Personalized Video Annotations

*Ying-Jie Hong, Ming-Chaun Li, Chih-Ming Chen and Zi-Han Yu*

Enhancing Chemical Lab Safety Education through a Mixed Reality Chemistry Experiment Platform

*Yu-Ya Hung, Ming-Chaun Li, Chih-Ming Chen and Chia-Cheng Tu*

Facilitating Mandarin Pronunciation Accuracy through a Gamified Tone Diagnosis and Feedback System

*Yun-Hui Liu, Ming-Chaun Li, Chih-Ming Chen and Jia-Jia Xin*

Learners' Gaming Experiences in the Issue-Based Board Game <Mosa Tayal>

*Geng-De Hong, Ju-Ling Shih, Wan-Ting Kuo and Yu-Hao Lu*

## July 15 (Tue) 11:35AM-1:00PM

Lunch on your own (Beverage and snacks are available at Foyer)

## July 15 (Tue) 1:00PM-2:40PM

### Room A LTLE 2

#### Session Chair: Yuichi Ono (University of Tsukuba)

Preliminary Practices for Beginner's Programming Course Utilizing Generative AI and Online Education

*Miyuki Murata, Naoko Kato and Tetsuro Kakeshita*

Evaluating Instructor Role in a Personal Software Process Improvement Course Based on the Process Data

*Shigeru Kusakabe, Masanobu Umeda, Keiichi Katamine and Shunsuke Araki*

AR Training for Automotive Repair Paint Inspection: Development and Evaluation

*Yuka Takai and Shigeru Ikemoto*

Principle-Driven Micro-Script Generation for Informal Collaborative Learning on Discussion Boards

*Hideki Kondo*

### Room C DSIR-SS1&SS4

#### Session Co-Chairs: Yoshikazu Asada (Jichi Medical University), Eriko Tanaka (Nihon University) and Takaaki Ohkawauchi (Nihon University)

Developing a Moodle-based e-portfolio for postgraduate medical education in Japan – A trial based on a nationwide clinical training system

*Yoshikazu Asada*

Investigation of the Current State of Data Science Education in High Schools and Higher Education Institutions

*Eriko Tanaka and Takaaki Ohkawauchi*

Japanese Tokenization using Simple Associative Arrays

*Michiko Yasukawa and Koichi Yamazaki*

Practice and Evaluation of Data Science Education for First-Year Students in Foreign Language Faculties - A Case Study of an On-Demand Course Using BI Tools -

*Shuntaro Iseri*

### Room D BMOT-SS1 and BMOT 2

#### Session Chair: Yokoyama Yuya (Advanced Institute of Industrial Technology)

Development of a Sequential Path Determination Method Integrating Flood Forecasting and Traffic Congestion Prediction

*Kota Funakoshi, Jundai Koketsu, Tatsunori Hiramoto, Yasuo Nihei and Aya Ishigaki*

Design of Charging Spot Placement Patterns of Wireless Power Transfer Systems for Automated Guided Vehicles in Logistics Warehouses

*Mana Kubota, Keiichi Ida, Aya Ishigaki, Kota Mori, Shoei Miyata and Nobukazu Hoshi*

Time-Efficient Multi-Agent Simulation Reflecting Actual Resident Population

*Tomoichi Ebata, Ryo Ariyoshi and Shinji Tanaka*

**Room E    ESKM-SS2-2**

**Session Co-Chairs: Kouichi Hirata (Kyushu Institute of Technology) and Atsuko Yamaguchi (Tokyo City University)**

The Impact of Purchase Path Satisfaction on Purchasing Decisions Using Multi-Agent System

*Keitaro Takaoki, Aya Saito and Atsuko Yamaguchi*

Detecting Bacteria in Gram Stained Smears Images by YOLO and SOD-YOLO

*Hikaru Kobata, Ukyo Kashino and Kouichi Hirata*

Fast Approximate Nearest Neighbor Search via Double Filtering of Quantized Projections

*Naoya Higuchi, Yasunobu Imamura, Takeshi Shinohara, Kouichi Hirata and Tetsuji Kuboyama*

Classifying Entire Images of Samples and Bacteria in Gram Stained Smears Images

*Tadashi Morikawa and Kouichi Hirata*

## **July 15 (Tue) 3:00PM-4:15PM**

**Room A    SCAI 3**

**Session Chair: Takafumi Nakanishi (Tokyo University of Technology)**

Wine Brand Identification from Electrochemical Measurements Using Neural Networks

*Yugi Honma, Suguru Ueda, Nobutomo Morita, Kenshin Takemura, Wataru Iwasaki and Shinya Ohmagari*

Pre-training for Transfer Reinforcement Learning by ACO-based Network Structural Optimization

*Kohtaro Uchida, Keiki Takadama and Hitoshi Iba*

Efficient Algorithms for Numeric Data Compression

*Yen-Yu Chen and Chang-Biau Yang*

**Room C    IDDC 1**

**Session Chair: Taishi Nemoto (University of Kochi)**

The Newly Established Subject "Theory and Methods for the Utilization of ICT in Education" in the Japanese Teacher Training Curriculum: An Examination of the Effects of Intensive and Remote Classes

*Mitsuhiro Watanabe and Tatsuya Horita*

Proposal for a PBL-type learning model using 3D Gaussian splatting

*Kazuya Murata and Taishi Nemoto*

Proposal for a Novel Recipe Generation Approach Using Inverse TF-IDF and Generative AI

*Mutsumi Kodama and Taishi Nemoto*

**Room D    ESKM-SS3 + ESKM 2**

**Session Chair: Hiroaki Furukawa (The University of Kitakyushu)**

Corpus Construction for Automatic Meal Planning

*Michiko Yasukawa and Falk Scholer*

Improving Historical Understanding through Metaverse-Based Digital Curation: A Case Study of WWII Taiwanese Civilian Internment

*Hsin-Pei Huang, Ming-Chaun Li, Chih-Ming Chen and Jung-Hsiu Weng*

Investigating the Impact of a Gamified Mixed Reality Digital Curation System on Learning Performance and Motivation

*Tsung-Lin Shih, Ming-Chaun Li, Chih-Ming Chen and Hsin-Yu Lin*

**Room E    ESKM-SS2-3 + ESKM 3**

**Session Co-Chairs: Kouichi Hirata (Kyushu Institute of Technology) and Atsuko Yamaguchi (Tokyo City University)**

Improved Prediction of Yeast-Like Fungi in Gram Stained Smears Images

*Tubasa Tanaka and Kouichi Hirata*

Improved Prediction of Geckler Classification in Gram Stained Smears Images for Sputum

*Kei Goto, Masaki Kono and Kouichi Hirata*

Digital technology applications for discovery of contextual links among records - Developments, challenges, and prospects of information sources from Chinese medieval history

*Yichen Wu*

**July 15 (Tue) 4:30PM-5:00PM**

**Bus Departure for the banquet venue**

Meeting point: Courtyard at International Conference Center

**July 15 (Tue) 6:00PM-8:00PM**

**Conference Banquet**



## July 16 (Wed) 9:30AM-11:35AM

### Room A SCAI-SS2 & SS3

#### Session Chair: Cheng Chin (Newcastle University)

Wavelet Transform and Remote Sensing for Crop System Mapping in Suphan Buri, Thailand

*Woraman Jangsawang, Teerayut Horanont and Kritchayan Intarat*

Feasibility Study on Elevator Door State Monitoring Using Electrical Power Analysis and Non-Intrusive Load Monitoring

*Pirmin Held, Daniel Weißhaar and Dirk Benyoucef*

Trial on 3D Gaussian Splatting Alignment Using EXIF Information of Images and Shooting Trajectory

*Shota Yamashita, Masaya Nakahara, Yoshimasa Umehara, Yoshinori Tsukada and Takumu Kuhara*

ThreadsGAN: A Deep Learning-based Generative Adversarial Network for Discussion Thread Generation

*Ya-Mien Cheng and Jheng-Long Wu*

### Room C LTLE 3

#### Session Chair: Jingyun Wang (Durham University) and Yuichi Ono (University of Tsukuba)

A Game Development Method for Beginner Teams Based on Scrum

*Shumpei Togo and Takafumi Tanaka*

What Emotions Do We Share? Comparing Emotional Expressions in Social Computing and Real-life Setting for Teachers' Professional Development

*Jo-Chi Hsiao, Shan-Mei Chang, Han-Yu Chi and Ler-Ui Lin*

Assessing Reflective Learning through Human Revision of AI-Generated Essays: A Multi-Phase Study

*Satoshi Kimura and Takuo Yasunaga*

ELEGANCE: A customizable Educational game for foreign guardians to understand Japanese school culture

*Xiaoyan Li, Ziliang Wang and Jingyun Wang*

### Room D BMOT 3

#### Session Chair: Yokoyama Yuya (Advanced Institute of Industrial Technology)

Proposal of a Method of Learning Strategic Silence to Improve the Effectiveness of Employee Voice

*Akiko Matsumoto and Makoto Ioki*

A Unified Approach to Medical Question Answering via Knowledge Graph Integration with Large Language Models

*Lien-Fa Lin and Ming-Zong Ke*

Developing a Generalized Newsvendor Model for Food Waste Reduction and Supply Stability

*Fumikazu Hoyano and Aya Ishigaki*

Unlocking Entrepreneurial Potential: Connection to Creation through a Visualizing Method for Enhancing Women's Business Networks in Tourism

*Nozomi Saito, Makoto Yamasaki and Seiko Shirasaka*

### Room E DSTM 1

#### Session Chair: Takaaki Hosoda (Advanced Institute of Industrial Technology)

The attribute framing effects that influence decision making are altered by gestures

*Kaede Takamune and Kazushi Nishimoto*

Solution method for vehicle routing problem with time windows considering uncertainty

*Tetsuya Sato and Kenta Moriwaki*

Assortment and Price Optimization under the Price-Dependent Tree Model

*Jen-Yen Lin*

Development of a Value Recognition Method for Working Mothers to Balance Work and Childcare based on Their Sense of Authenticity

*Hanako Tajima, Seiko Shirasaka, Takashi Matsuura and Tsubasa Ito*

Lottery Gambling Risk Control Measures Based on Differential Social Influence

*Masafumi Nagata and Satoshi Takahashi*

## **July 16 (Wed) 11:35AM-1:00PM**

Lunch on your own (Beverage and snacks are available at Foyer)

## **July 16 (Wed) 1:00PM-2:40PM**

### **Room A     SCAI 4**

#### **Session Chair: Takafumi Nakanishi (Tokyo University of Technology)**

Application of Multi-Task Deep Learning in Electricity Load Forecasting and Building Energy Management

*Kai-Bin Huang and Yu-Hsuan Lee*

Visualization of Breathing During Piano Performance Using a Non-Contact Estimation Method Based on a Three-Point Marker System

*Ayako Minematsu, Hiromu Abe and Takafumi Nakanishi*

Explaining Clusters via Global Feature Importance and Automatic Labeling using Large Language Models

*Takafumi Nakanishi*

### **Room C     SBIT-SS1**

#### **Session Chair: Hiroyuki Ono (Chiba Institute of Technology)**

Creating Explanatory Text for Slide-type Quizzes using Generative AI

*Atsushi Shimoda and Takumi Koshika*

The impact of project manager's illusion of control on QCD performance

*Eri Kawano and Hironori Takuma*

Study on Environmental Load Emissions of Transportation

*Yohei Hara, Hiroyuki Ono and Yutaka Shirai*

### **Room D     BMOT 4**

#### **Session Chair: Hidekazu Iwamoto (Josai International University)**



The Impact of Introducing University Research Administrators(URAs) into Japanese National Universities -  
Strengthening Research Capabilities and Improving Reputation Management

*Masakuni Taniguchi, Keisuke Uenishi and Kiminori Gamba*

Changes in Visitor Circulation Behavior Due to Event Hosting in Yokohama and Yokosuka Using People Flow Data

*Rino Ogose, Yuki Mekata and Hideki Katagiri*

Robust Demand Forecasting Using Decomposition-Based Variable Selection in Data-Scarce Environments

*Shota Kimoto, Yurika Ono, Aya Ishigaki, Daichi Arimizu, Takeru Moriyama and Takayuki Itsui*

From Strangers to Community Builders: The Role of University Students in Regional Engagement and Tourism  
Promotion

*Osamu Nakajima and Hidekazu Iwamoto*

## **Room E DSTM-SS1-1**

**Session Chair: Ryuta Takashima (Tokyo University of Science)**

Comprehensive Optimization of a Hydrogen Supply Network that Integrates Production and Feedstock Systems: A  
Case Study of Japan

*Jundai Koketsu and Aya Ishigaki*

The role of Sustainable Management for Two-sided Platform Competition

*Yutaro Oga, Kazuya Ito and Ryuta Takashima*

Design of an Agent to Reproduce Ordering Behavior Considering Risk Aversion

*Koki Shimamura, Jundai Koketsu, Aya Ishigaki, Ryuta Takashima and Hajime Nishida*

Industrial Specific Evaluation For Corporate Social Responsibility

*Yuki Okamoto, Yutaro Oga, Kazuya Ito and Ryuta Takashima*

## **Room F ESKM-SS1 and ESKM 4**

**Session Co-Chairs: Kentaro Haraguchi (Seinan Gakuin University) and Daisuke Ikeda (Kyushu University)**

Efficient Pattern Matching in Unordered Term Tree Patterns with Height Constraints

*Shintaro Matsushita, Takayoshi Shoudai and Yusuke Suzuki*

Change Detection for Popular Song Lyrics before and after Social Events using a Topic Model

*Daichi Hishioka and Daisuke Ikeda*

Ethical Considerations in AI-Driven Services: Balancing Facial Recognition and Privacy

*Hiroki Tanioka*

## **July 16 (Wed) 3:00PM-4:40PM**

### **Room A SCAI 5**

**Session Chair: Takafumi Nakanishi (Tokyo University of Technology)**

Self-Expressive Outfit Recommendation via Transformer-Based Compatibility Prediction

*Masataka Miyawaki, Issei Terada and Yoshitaka Kameya*

LLM-Based Stepwise Dialogue and Phase-Appropriate Information Recommendation for Goal Achievement

*Takayoshi Sakurai, Soki Kawashima, Ekai Hashimoto, Fuminori Nagasawa and Shun Shiramatsu*

Artificial Bee Colony Algorithm for Coalition Structure Generation

*Suguru Ueda and Yuta Yamamoto*

Multi-User Activity Recognition in an Indoor Environment with Transformer Architectures

*Md Kobir, Pedro Machado, Ahmad Lotfi, Daniyal Haider and Isibor Kennedy Ihianle*

## **Room C IDDC 2**

**Session Chair: Taishi Nemoto (University of Kochi)**

The taxonomies project: coding as botanical art

*Andrea Valente, Shanice Otersen and Emanuela Marchetti*

A study on active inquiry learning using interactive applications in science museum

*Ryushi Sanada and Yasuyuki Hirai*

## **Room D CDEF-SS2-4 and CDEF 1**

**Session Chair: Masanori Hirano (Preferred Networks, Inc.)**

Fine-tune or RAG? A Case Study on Solving Japanese Financial Planning Skills Examinations

*Kazutaka Nishiwaki, Shunsuke Onuma and Kazuma Kadowaki*

Nowcasting theme park visitor numbers and sales using SAR satellite images

*Yoshihiko Ichikawa, Tetsuya Nasuda, Kaito Takano and Kei Nakagawa*

Machine Learning-Based Simulation of Accounting Information's Contribution in the Municipal Bond Market

*Kentaro Haraguchi, Yasuhiro Tamba, Daisuke Ikeda, Shuji Abe and Keiichi Oishi*

KAN-Based Autoencoder for Constructing Three-Factor Model of Japanese Government Bond Yield Curves

*Yoshiyuki Suimon and Ryosuke Yoneda*

## **Room E DSTM-SS1-2**

**Session Chair: Ryuta Takashima (Tokyo University of Science)**

The Effects of Forward Contracts on Renewable Integration and Electricity Market Efficiency

*Taisei Ishikawa, Kazuya Ito, Mari Ito and Ryuta Takashima*

The impact of generator-side transmission charges on plant location and social surplus

*Hirota Hiraiwa, Kazuya Ito and Ryuta Takashima*

Analysis of the Effects of Riparian Bamboo on River Water Quality using Regression Analysis

*Shizu Itaka, Yohei Komatsu, Ariane Gourlaouen and Tamao Kasahara*

An Analysis of the Effect of Workers' Stair Movement on Construction Elevator Transportation Planning

*Takuma Terasaki, Kota Funakoshi and Aya Ishigaki*

**July 16 (Wed) 5:00PM-6:30PM**

**Ice cold beer and Wine Festival at Courtyard**

---

## July 17 (Thu) 9:30AM-11:35AM

### Room A SCAI 6

#### Session Chair: Takafumi Nakanishi (Tokyo University of Technology)

Weed Height Estimation for Improving Weeding Efficiency in Organic Rice Cultivation

*Mako Yoshimura, Soma Asuka, Kentaro Machida, Tetsuya Nakamura, Taiichiro Ookawa and Hironori Nakajo*

Comment Explanation Generation on Video Platforms Using an LLM-Based Chunking Approach

*Min-Chin Ho and Jheng-Long Wu*

Using Visual-Descriptive Text Generation for Enhanced Multimodal Sentiment Analysis

*Hsin-Yun Hsu and Jheng-Long Wu*

Iterative keyword hierarchy generation using LLMs for document classification

*Giada Confortola and Satoru Watanabe*

Toward a Mechanism for Generating Offensive Off-topic Replies on Social Media

*Gento Taniguchi and Naoki Fukuta*

### Room B ESKM 5

#### Session Chair: Daisuke Ikeda (Kyushu University)

XABC-STs: Developing A Japanese Text Embedding Benchmark for Evaluating Word Understandings

*Ryota Nishiura, Seiji Tsuchiya and Hirokazu Watabe*

Person-Independent Position Estimation Using WiFi CSI with Supervised Contrastive Learning

*Hidekazu Yanagimoto, Teppei Otsuki and Kiyota Hashimoto*

Toward Structured Understanding of Human--Wildlife Conflict News: Malaysian Case Study on Elephant Incidents

*Muhd Izzuddin Aiman Bin Zolkipli, Masato Kikuchi and Tadachika Ozono*

On-Demand Instructional Material Providing Agent Based on MLLM for Tutoring Support

*Takumi Kato, Masato Kikuchi and Tadachika Ozono*

Comparison of Recreational Value Using the Travel Cost Method for Tokyo and Nagasaki Tourist Attractions

*Ayumi Kasahara, Akihisa Kodate and Yu Ichifuji*

### Room C LTLE 4

#### Session Chair: Lin Shengkai (Hiroshima city university)

Proposal of a One-on-One Meeting Program to Enhance the Sense of Self-Usefulness Among Residential Care Workers at a Children's Home: A Prototype-Based Evaluation

*Kiyonobu Kusu, Toshiyuki Yasui, Takashi Maeno and Seiko Shirasaka*

Developing Digital Games for Improving Daily Lives of the Elderly and Caregivers

*Tomoki Takahashi, Fahim Khan and Ken Sakamura*

Research on enhancing the accuracy of issue discrimination in local government DX skill assessment through collaborative verification using generative AI: Aiming to develop local government DX human resources based on DX literacy standards

*Masahiro Sakamoto, Yukihiro Matsubara and Kousuke Mouri*

Simulating Strategic Decision-Making: A Digital System for Issue-Based Educational Games

*Yu-Hsun Hsueh, Ju-Ling Shih, Hsuan-Wen Chen and Chia-Chun Tseng*

Dynamic Prompt-Controlled Training System Using Large Language Models for Facilitating In-Depth Customer Interview Questions

*Soki Kawashima, Takayoshi Sakurai, Kohei Aoki, Ekai Hashimoto and Shun Shiramatu*

## **Room D CDEF 2**

**Session Chair: Masanori Hirano (Preferred Networks, Inc.)**

Financial time series prediction with LLMs under regime switching

*Rika Morita, Kei Nakagawa and Takahiro Hoshino*

Learning from Double Positive and Unlabeled Data for Potential-Customer Identification

*Masahiro Kato, Yuki Ikeda, Kentaro Baba, Takashi Imai and Ryo Inokuchi*

Neural Additive Models for Cross-Sectional Stock Return Prediction

*Koki Manabe and Kei Nakagawa*

Empirical Study on the Diversification Effect of Art Assets

*Rika Morita, Natsumi Machida, Kosuke Yamamoto, Kei Nakagawa and Takahiro Hoshino*

Decomposing and Understanding Valuation Multiples Using Machine Learning Methods: Evidence from Japan

*Enomoto Yoshiro and Kei Nakagawa*

## **July 17 (Thu) 11:35AM-1:00PM**

Lunch on your own (Beverage and snacks are available at Foyer)

## **July 17 (Thu) 1:00PM-2:40PM**

### **Room A SCAI 7**

**Session Chair: Takafumi Nakanishi (Tokyo University of Technology)**

Dual-Rate Alpha Binary Networks: An Energy-Efficient Optimization Approach for Waste Classification

*Duc-Anh Pham and Hironori Nakajo*

Evaluating Sentence Filtering for Transformer-based Nepali Abstractive Summarization

*Sunil Dahal and Katsuhide Fujita*

Estimating the Coverage of Multiple Species of Paddy Field Weeds Using Semantic Segmentation

*Yusuke Sayou, Duc-Anh Pham, Tetsuya Nakamura, Keisuke Katsura, Taiichiro Ookawa and Hironori Nakajo*

Toward a Multi Agent Approach for LLM-Based Dynamic Vehicle Control and Communication in Accidental Condition

*Md Ashifujman Rafi and Naoki Fukuta*

### **Room B LTLE 5**

**Session Chair: Lin Shengkai (Hiroshima city university)**

Preliminary Practices for Java Programming Tools and TDD Courses Utilizing Generative AI and Online Education

*Mika Ohtsuki and Tetsuro Kakeshita*

Modeling Support System of Variational Autoencoder for Image Augmentation and Anomaly Detection

*Zhelin Zheng, Fusaomi Nagata, Hisami Tamano, Hitoshi Nakamura, Hirohisa Kato, Akimasa Otsuka, Takeshi Ikeda, Keigo Watanabe, Maki K. Habib and Ahmad Shahrizan Abdul Ghani*

A method for converting lecture videos into microcontents and visualizing them

*Masako Furukawa and Yoshitomo Yaginuma*

The Process of Content Analysis for Narrative Medicine: Methodological Exploration and AI Applications

*Wei-Sung Peng, Ju-Ling Shih, Chien-Da Huang and Chia-Min Ho*

## **Room C DSIR-SS3&SS5 and DSIR 1**

**Session Co-Chairs: Kenjiro Sakaki (Tenshi College), Kunihiro Takamatsu (Institute of Science Tokyo) and Naruhiko Shiratori (Tokyo City University)**

Predictors of US College and University Mergers

*Nicholas Sengstaken and Paul Umbach*

Elucidating the Direct and Indirect Effects of Pre-admission Characteristics on First-Year College GPA: A Bayesian SEM Approach

*Naruhiko Shiratori*

Development of a Method for Visualizing Learning Out-comes Using Diploma Policy Achievement Levels Based on Multiple Indicators

*Kenjiro Sakaki, Ryuna Hoshi and Tsuyoshi Uemura*

Contradiction and Abduction: Catalyzing the Data-Driven and Hypothesis-Driven Approach in Eduinformatics

*Kunihiro Takamatsu, Sayaka Matsumoto, Tsunenori Inakura, Katsuhiko Murakami, Shotaro Imai, Ikuhiro Noda, Kenya Bannaka, Yasuhiro Kozaki, Aoi Kishida, Kenichiro Mitsunari, Masato Omori, Yasuo Nakata and Masao Mori*

## **Room D CDEF 3**

**Session Chair: Yoshiyuki Suimon (Keio University)**

Analysis of Factors for Improving Nonnormal Borrowers Identification Using Nonfinancial Data from Business-to-Business Transaction Networks

*Tsukasa Kobayashi, Yoshiaki Narusue and Hiroyuki Morikawa*

Neyman Allocation for Two-Armed Gaussian Best-Arm Identification with Unknown Variances

*Masahiro Kato*

Predicting Startup-VC Matches with Structural Embeddings and Temporal Investment Data

*Koutarou Tamura*

Conditional Diffusion Model with Volatility Estimation for Financial Time-Series Generation

*Ryoya Yoshida, Masanori Hirano and Kentaro Imajo*

## **July 17 (Thu) 3:00PM-4:40AM**

### **Room A ESKM 6**

**Session Chair: Hidekazu Yanagimoto (Osaka Metropolitan University)**

Collective Wisdom for Smart Betting: A Social-Driven Esports Prediction Model

*Chin-Yu Hsieh and Jyh-Hwa Liou*

Augmented Data Generation and Selection for Aspect Estimation

*Yusei Fukata and Kazutaka Shimada*

## **Room B    SBIT 3**

**Session Chair: Yukihiro Shintani (Chiba Institute of Technology)**

A Study on the Secure Transmission of Confidential Information Against HNDL Attacks

*Hideki Goromaru and Genta Ohashi*

How KOL Recommendations Influence Player Behavior: An Analysis of Information Cascade Phenomena through Path of Exile Item Price Fluctuations

*Lien-Fa Lin and Yan-You Liu*

Mapping ISO 15408 Security Functions to SDLC Phases: Insights from a Questionnaire-Based Study

*Samodi Fernando, Hideto Ogasawara and Shigeaki Tanimoto*

The Psychological Impact of Japan's Media Mix Strategy on 2.5-Dimensional Idol Engagement: A PLS-SEM Analysis

*Liang-Chun Lu, Shih-Yung Chiu and Wan-Shan Nieh*

## **Room C    DSIR 2**

**Session Chair: Naruhiko Shiratori (Tokyo City University)**

Applying Text Generation AI to Assist Categorical Database Construction from Institutional Regulations

*Tsunenori Inakura, Shotaro Imai, Kunihiko Takamatsu, Sayaka Matsumoto and Masao Mori*

Performance Improvement on the 2024 Impact Ranking by taking University M as Example

*Cherng-Min Ma, Chao-Ming Yang and Sheng-Chi Chen*

Secular Changes In Career Preferences Among Medical Students in Japan

*Koji Tsunekawa, Masako Kakizaki, Tsukasa Yajima and Osamu Takakuwa*

Do Involuntary Enrollees in Teacher Training Courses Aspire to Teach? A Survey of First-Year Students at a Japanese National University

*Ryosuke Sakurai and Takumi Watanabe*

## **Room D    LTLE 6**

**Session Chair: Fahim Khan (Toyo University)**

Fostering Inquiry Confidence in Elementary Students through a Game-Based Socioscientific Issue Learning Approach

*Yu-Hao Lu, Ju-Ling Shih, Pinchen Chen and Geng-De Hong*

SNS Ninja: An AI-Powered Cooperative Game for Mastering Social Media Etiquette

*Toshiki Katanosaka, Fahim Khan and Ken Sakamura*

<TechTopia> and Robots: Developing Computational Thinking in Young Learners through a Complex Board Game

*Hsuan-Wen Chen, Ju-Ling Shih, Yu-Hsun Hsueh and Chia-Chun Tseng*

Digital Notebook System for Digital Textbooks with Automatic Reconstruction Based on Learning Context

*Moe Yamamoto and Takafumi Tanaka*

## July 17 (Thu) 5:00PM-6:00PM

### **Farewell Reception at Sea Lounge**

---

## July 18 (Fri) 9:30AM-1:00PM

**Room B    Online**

### **CDEF**

**Session Chair: Kei Nakagawa (Osaka Metropolitan University)**

Locally Guided Global Surrogate Model for Deep Multi-Factor Models

*Yugo Fujimoto, Kei Nakagawa and Kenji Oki*

SBLM: Sparse Black Litterman Model using the Spike and Slab Prior

*Tatsuki Masuda, Kei Nakagawa and Takahiro Hoshino*

Director Skill Matrix Disclosure and Its Impact on Corporate Performance and ESG Scores: Evidence from Japan

*Dai Yamawaki, Koutarou Tamura, Kaito Takano and Kei Nakagawa*

Quantifying Financial and Economic Document Similarity Using Optimal Transport with Additive Compositionality

*Tomoya Akamatsu and Kei Nakagawa*

### **SCAI**

**Session Chair: Takafumi Nakanishi (Tokyo University of Technology)**

Enhanced Recognition of Damaged Fingerprints Using Transfer Learning for Forensics

*Afef Thabet, Nada Gannouni, Fatma Sioui, Jaouhar Fattahi, Mohamed Mejri and Lassaad Latrach*

Lightweight Convolutional Recurrent Neural Networks for Sound Event Classification

*Nayana Agrahara Dattatri, Cheng Siong Chin, Daniel Archambault and Caizhi Zhang*

A Fuzzy Multi-Task Learning Framework Based on a Compressed Sensing CNN Model

*Shun-Hung Tsai, Hsiang-Hung Hsu and Chih-Hua Chien*

Cross Framework Comparative Analysis of Deep-ArrhyNet for High-Accuracy Arrhythmia Classification

*Sayli Aphale and Eugene John*

**Room C    Online**

### **ESKM**

**Session Chair: Daisuke Ikeda (Kyushu University)**

Game Recommendation via Graph Convolution and Meta-Learning Techniques

*Jian-Heng Chen, Duen-Ren Liu and Yu-Xuan Du*

## **LTLE**

**Session Chair: Yokoyama Yuya (Advanced Institute of Industrial Technology)**

Characteristics and Challenges of SNS Use among Adolescents with Neurodevelopmental Disorders

*Chie Kato*

Equity Pedagogy and the 21st Century Classroom: A Scoping Review

*William Tarimo, Elizabeth Flathers and Nicholas Woods*

## **BMOT**

**Session Chair: Hidekazu Iwamoto (Josai International University)**

A Preliminary Analysis concerning Knowledge Creation and Performance of R&D-oriented SMEs under Uncertainty

*Katsuhiro Suzuki*

Social Engineering Countermeasures Based on Psychological Vulnerabilities

*Shigeaki Tanimoto, Mizuki Maeda, Takashi Hatashima and Atsushi Kanai*